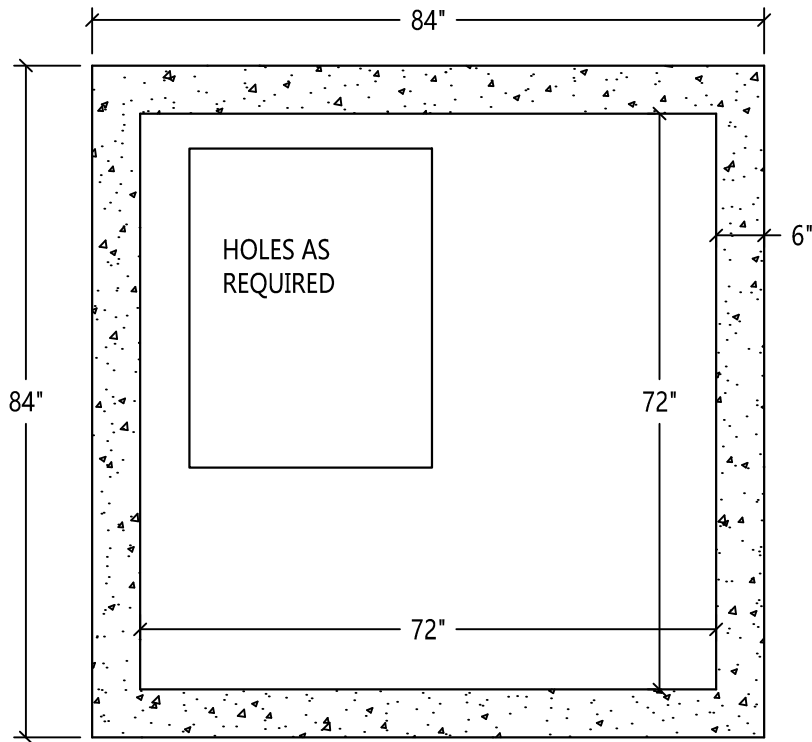
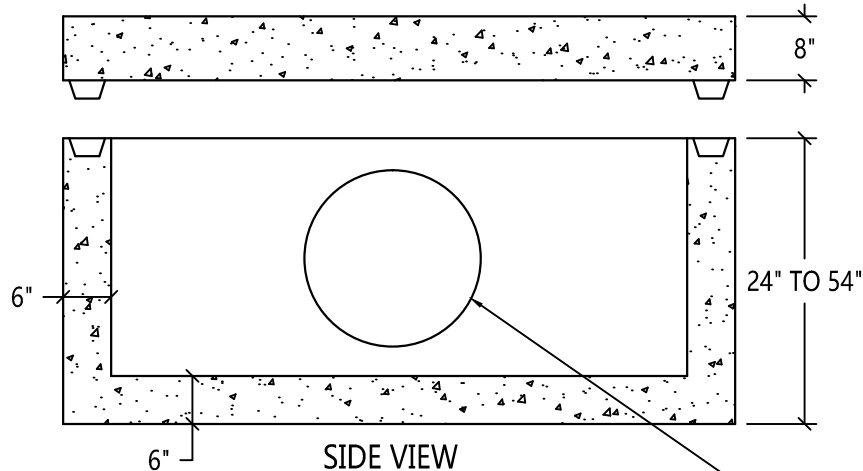


# 72" X 72" INLET BOX



TOP VIEW



SIDE VIEW

**SPECIFICATIONS:**

MINIMUM STRENGTH OF CONCRETE - 4,000 P.S.I. @ 28 DAYS

AIR ENTRAINMENT -  $5\frac{1}{2}\% \pm 1\frac{1}{2}\%$

STEEL REINFORCEMENT - 4"X4" - 4 GAUGE WIRE MESH IN SIDES AND BOTTOM

RISER SECTIONS AVAILABLE FROM 6" TO 48"

**NOTE:** HOLES OR KNOCKOUTS ARE LOCATED TO MEET CUSTOMER'S REQUIREMENTS



## Scranton Craftsmen, Inc



930 Dunmore Street

Throop, PA 18512

[www.scrantoncraftsmen.com](http://www.scrantoncraftsmen.com)

[sales@scrantoncraftsmen.com](mailto:sales@scrantoncraftsmen.com)

Toll Free: 1800-775-1479

Phone: (570) 347-5125

Fax: (570) 489-4212